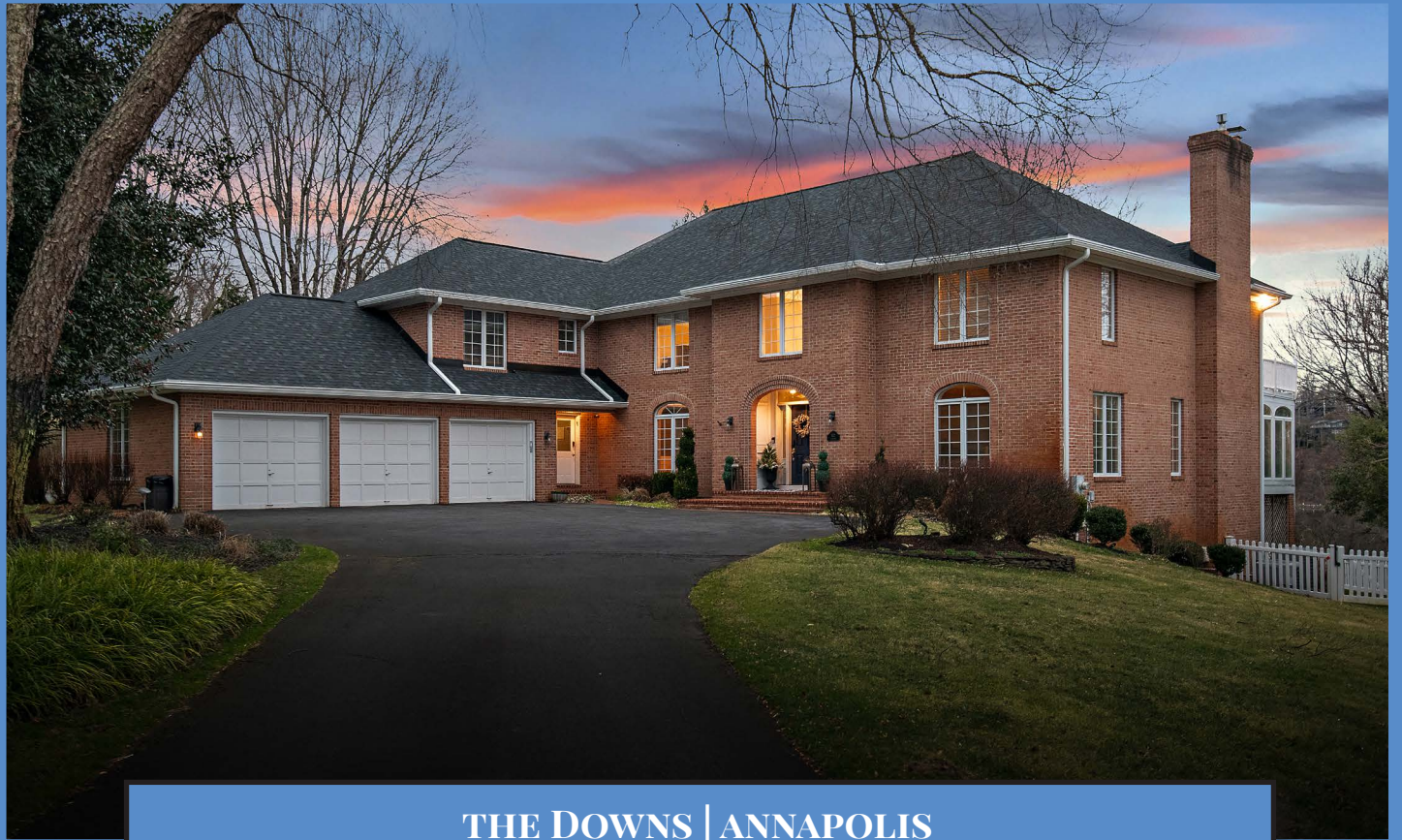
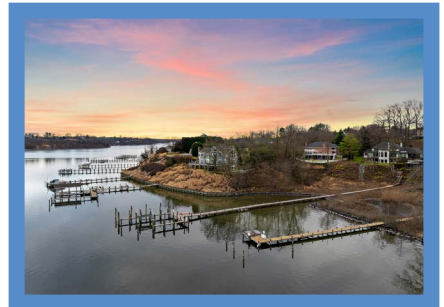


*Hubble
Bisbee*

CHRISTIE'S
INTERNATIONAL REAL ESTATE



THE DOWNS | ANNAPOLIS
812 COACHWAY



LOCATIONS

2330 W Joppa Road, Suite 104
Lutherville, MD 21093

181 Harry S Truman Pkwy Ste 200
Annapolis, MD 21401



KEISHA MCCLAIN

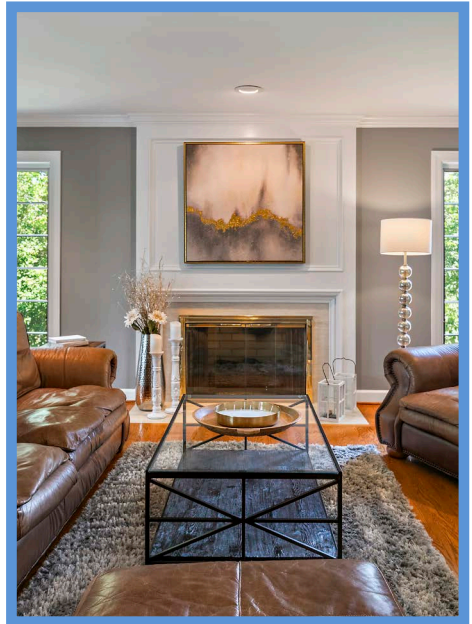
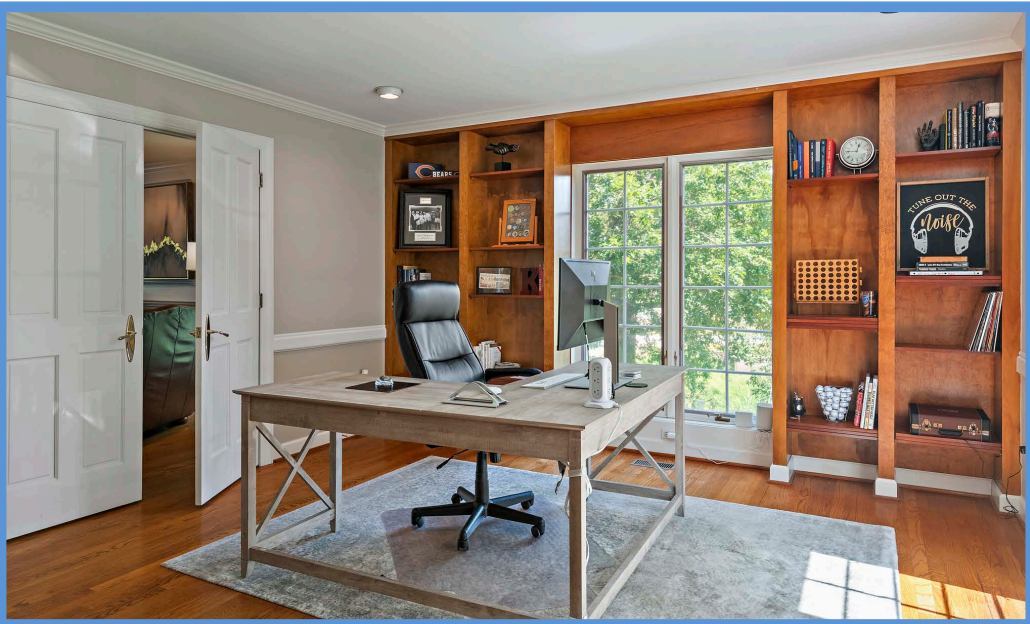
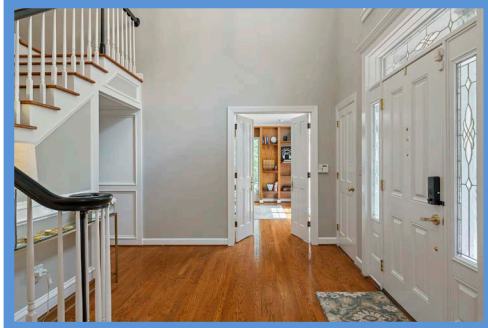
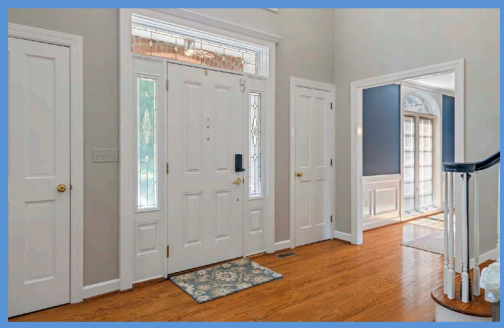
Realtor®

KeishaMcClain@HubbleBisbee.com

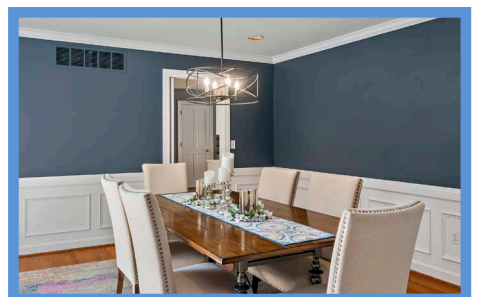
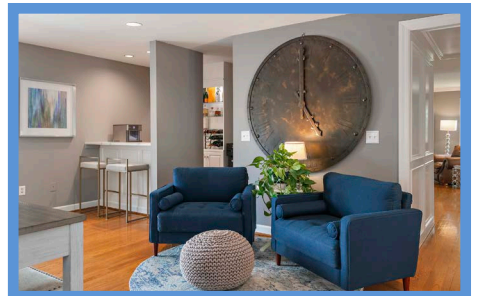
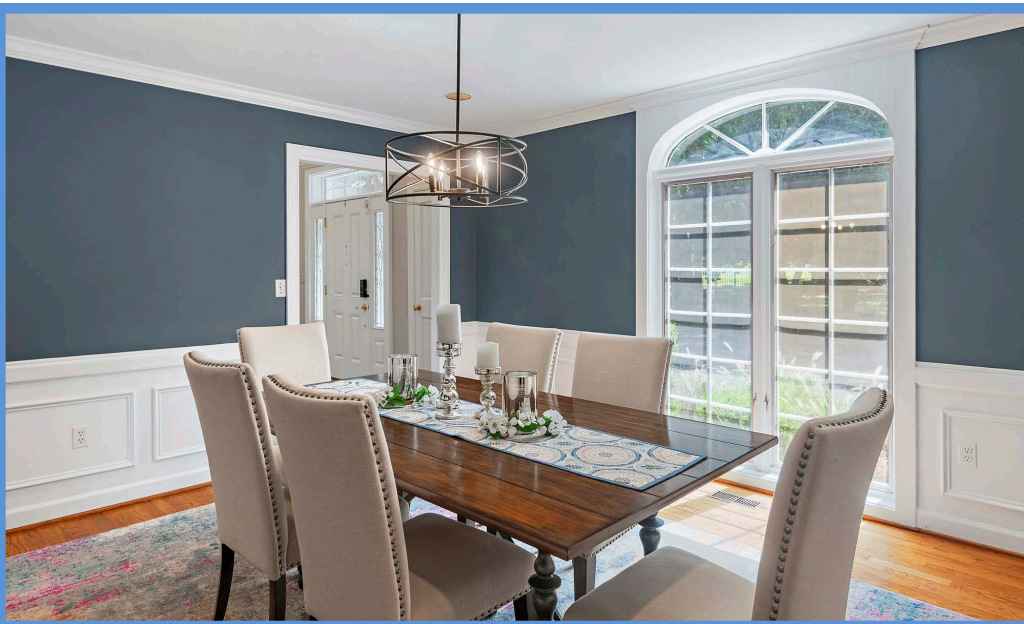
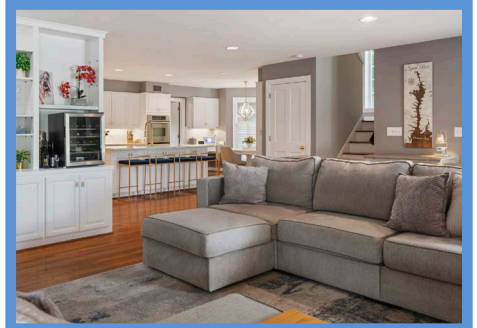
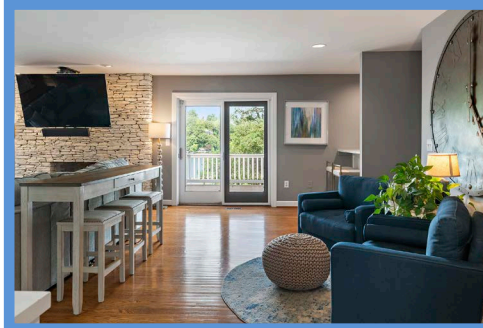
443-414-2168 (Mobile)

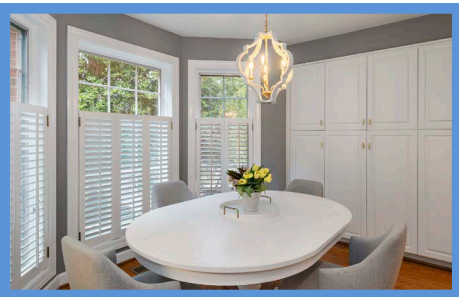
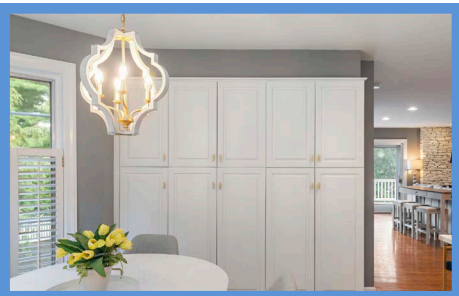
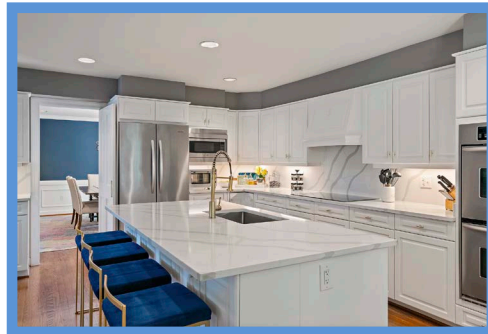
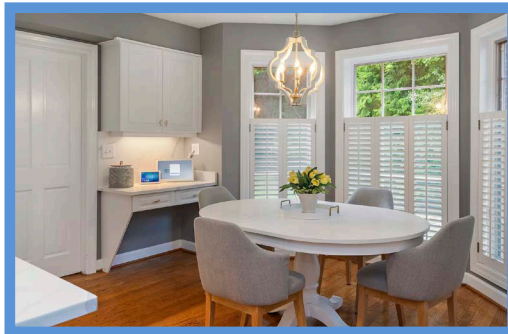
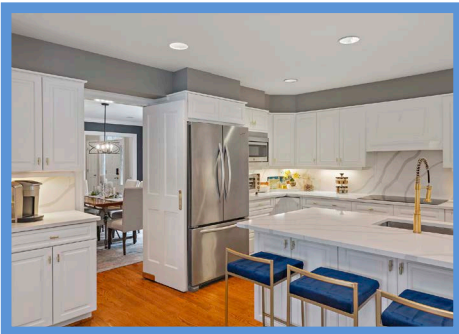
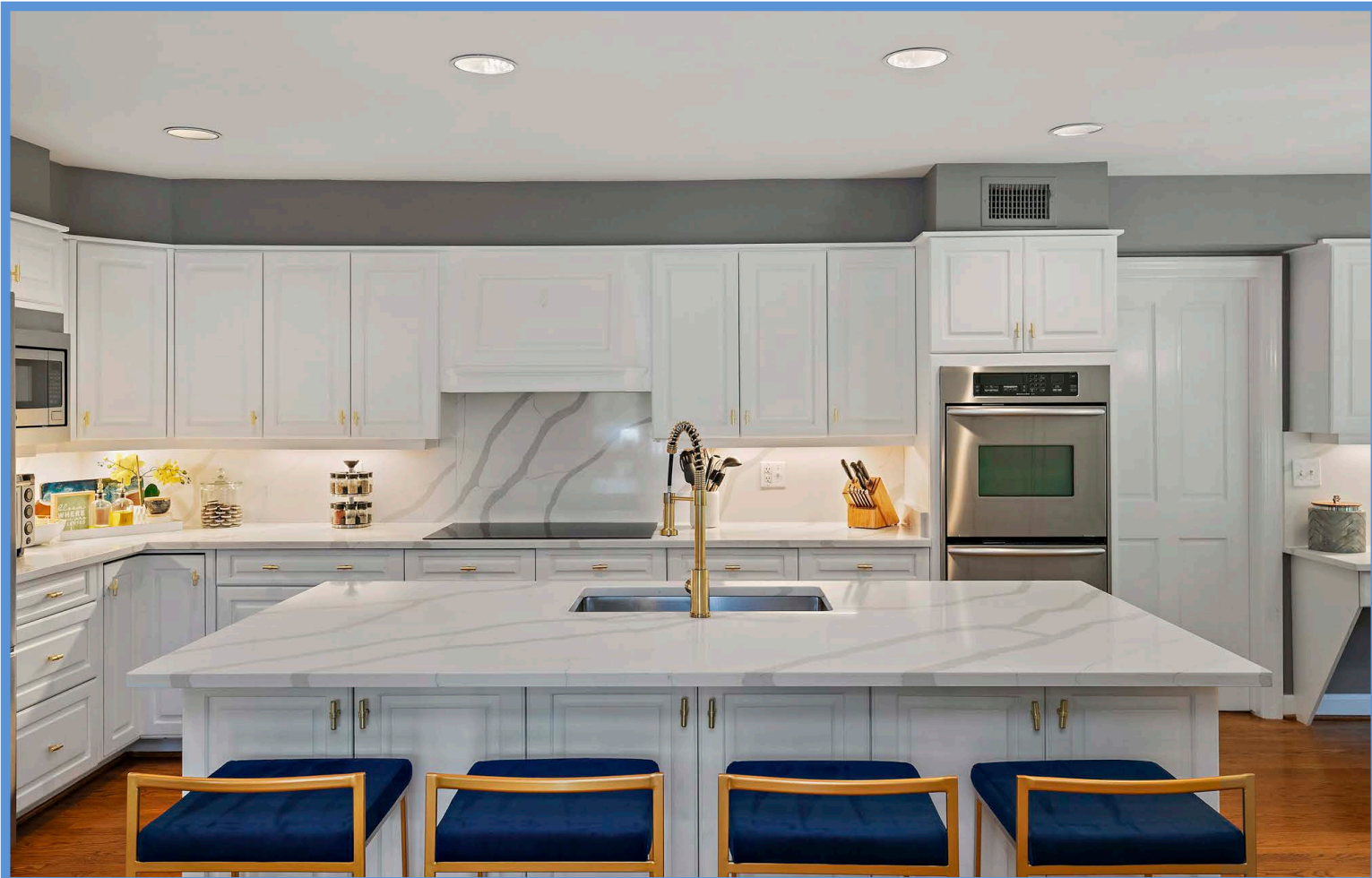
410-321-1411 (Office)

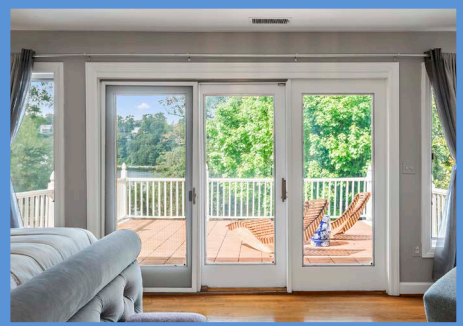
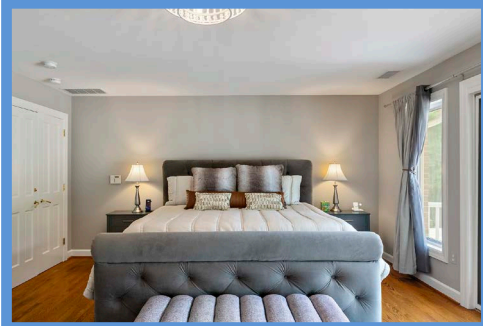
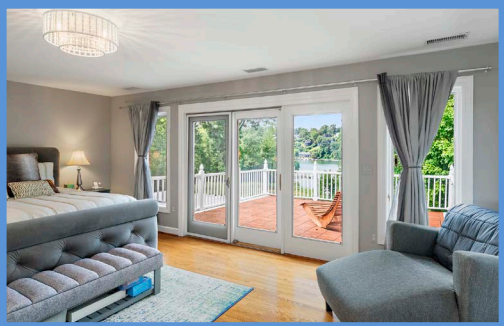
WWW.HUBBLEBISBEE.COM | (410) 321-1411 (OFFICE) | 

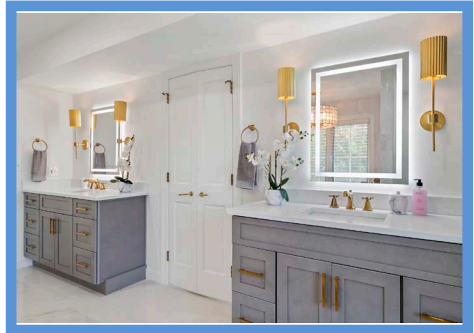
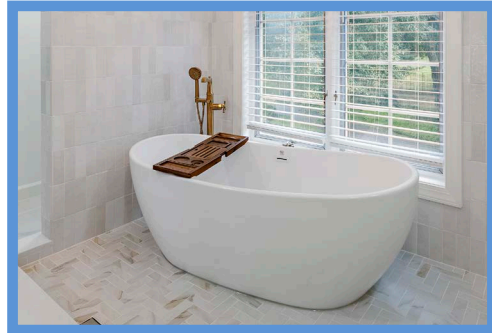
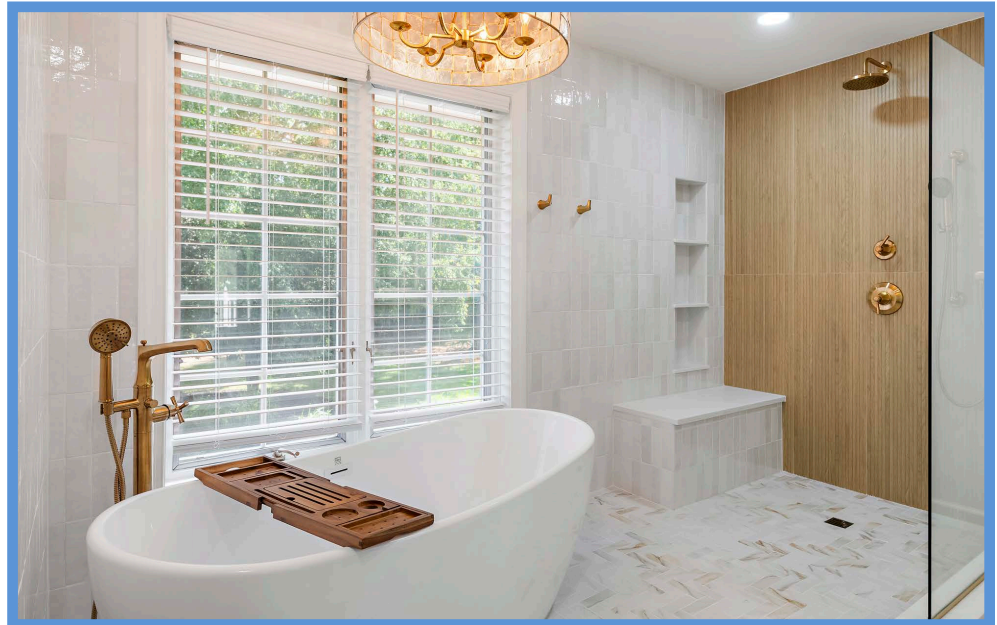
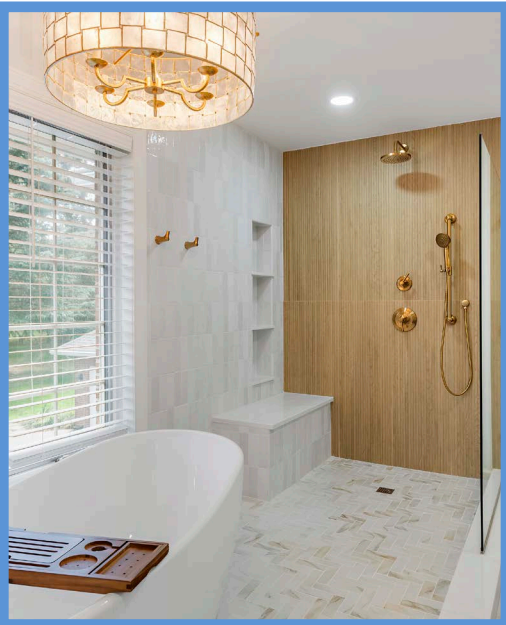












FOYER 13'8" X 13'7"

- Paneled entry door with leaded glass transom and sidelights
- Two-story
- Hardwood flooring
- Open oak staircase with hardwood handrails and painted spindles
- Wall panel moldings on staircase and passage to Living Room
- Double window above main entry
- Two closets
- Modern brass pendant light
- Double doors to Office
- Wide cased portal to Dining Room

DINING ROOM 14'11" X 13'7"

- Hardwood flooring
- French doors with arched transom
- Crown molding
- Chair rail with wainscot moldings
- Modern chandelier
- Recessed lighting
- Double doors to Family Room
- Swinging door to Kitchen

OFFICE 14'11" X 13'8"

- Hardwood flooring
- Full length built-in bookcases in natural finish
- French doors with arched transom
- Double window between bookcases
- Crown molding
- Chair rail
- Recessed lighting
- Double doors to Living Room

LIVING ROOM 20'6" X 20'3"

- Hardwood flooring
- Gas fireplace with Colonial surround molding, marble surround and hearth, glass door enclosure and wall panel moldings above
- Two windows flanking fireplace
- Crown molding
- Recessed lighting
- Passage to Family Room with wall panel moldings
- Sliding glass doors with full-length sidelights to Sunroom

SUNROOM 16'2" X 16'0"

- Hardwood flooring
- Three walls of floor-length windows with arched transoms
- Glazed door to Deck
- Recessed lighting
- Ceiling fan

FAMILY ROOM 32'2" X 22'5"

- Hardwood flooring
- Stacked stone chimney wall with gas fireplace
- Raised-panel wet bar with quartz counters, sink and illuminated glass shelving above base cabinets
- Custom built-in bookcases with base cabinets
- Three sets of sliding glass doors to Deck
- Open back staircase to Upper Level and concealed staircase to Lower Level
- Recessed lighting
- Access to Powder Room at wet bar
- Double doors to Dining Room
- Flows to Kitchen
- Wall mount TV negotiable

KITCHEN 24'3" X 14'0"

- Hardwood flooring
- White raised panel base cabinets, wall cabinets, island/breakfast bar, pantry cabinets and planning desk
- Marble finish quartz counters and backsplashes
- KitchenAid stainless steel refrigerator
- Induction cooktop with range hood
- KitchenAid stainless steel double wall oven
- Stainless steel built-in microwave
- KitchenAid stainless steel dishwasher
- Stainless steel undermount sink with disposal
- Under-counter wine cooler
- Breakfast area in bay window with plantation shutters and modern pendant light
- Recessed lighting
- Under-cabinet lighting
- Swinging door to Dining Room
- Access to Mudroom

MUDROOM 14'1" X 8'0"

- Double closet
- Powder Room
- Exit door to driveway
- Access to Garage

GARAGE 32'5" X 23'1"

- Three car
- Finished
- Automatic door openers
- Two windows
- Exit door

UPPER LEVEL

HALL

- Hardwood flooring
- Landing for main staircase with banister overlook to Foyer
- Back staircase to Kitchen
- Crown molding
- Recessed lighting

PRIMARY BEDROOM

21'0" X 15'4"

- Hardwood flooring
- Gas fireplace with traditional wood mantel, marble surround and hearth
- Triple sliding glass doors to private Deck flanked by 2 windows
- Two windows flanking fireplace

- Modern ceiling light
- Recessed light
- Passage to Primary Bath with 2 walk-in closets
- Wall mount TV negotiable

PRIMARY BATH 15'1" X 11'1"

- Double door entry
- Marble finish porcelain tile walls
- Two matching vanities each with quartz top, undermount sink, illuminated back-lit mirrors and modern wall scone lighting with shades
- Matching linen cabinet
- Wet room with ceramic tile walls to ceiling, free-standing soaking tub with handheld shower, rain shower, additional shower, built-in bench and wall niches, glass shower partition, double window with plantation blind, recessed lighting and modern pendant light
- Additional window
- Recessed lighting
- Exhaust fan

BEDROOM 2 15'4" X 13'1"

- Wall-to-wall carpeting
- Double window
- Two double closets
- Ceiling fan with lighting
- Access to Shared Bath

BEDROOM 3 15'4" X 14'11"

- Wall-to-wall carpeting
- Double window
- Sliding glass doors to private deck
- Walk-in closet
- Access to Shared Bath

SHARED BATH 10'0" X 5'11"

- Ceramic tile floor
- Double vanity with quartz top, under mount sinks, framed mirrors and overhead lighting
- Ceramic tiled shower stall with glass door enclosure
- Exhaust fan

BEDROOM 4 14'11" X 13'10"

- Wall-to-wall carpeting
- Bay window with plantation blinds
- Recessed lighting
- Ceiling light
- Passage to Bonus Room with walk-in closet and access to private Bath

BATH 7'1" X 5'0"

- Ceramic tile floor
- Vanity with quartz top, under mount sink, framed mirror and overhead lighting
- Tub/shower combination with ceramic tile surround and sliding glass doors
- Window with woven shade
- Exhaust fan

BONUS ROOM 17'7" X 10'3"

- Wall-to-wall carpeting
- Two double windows with plantation blinds
- Ceiling fan with light

BEDROOM 5 16'3" X 13'7"

- Hardwood flooring
- Double window with pleated shade and built-in window seat with cushion
- Two closets
- Ceiling fan with lighting
- Private Bath

BATH 7'1" X 5'0"

- Ceramic tile floor
- Vanity with quartz top, under mount sink, framed mirror and overhead lighting
- Tub/shower combination with ceramic tile surround
- Exhaust fan

LAUNDRY ROOM 8'2" X 7'7"

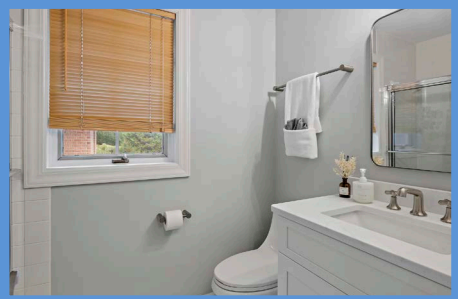
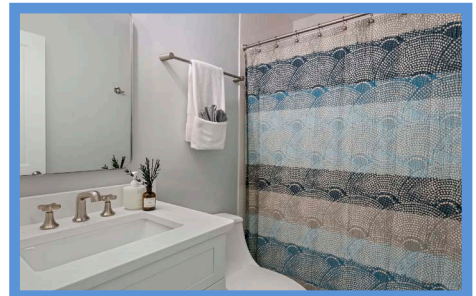
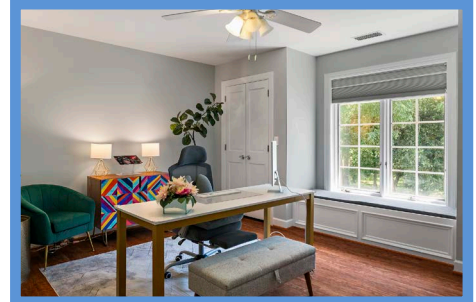
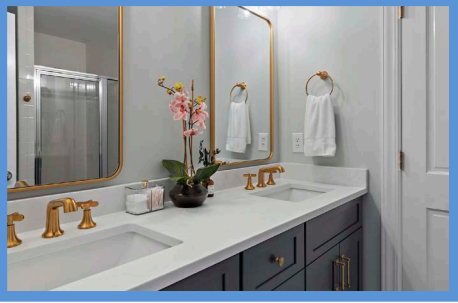
- Ceramic tile floor
- Wall cabinets and base cabinet with stainless steel sink
- Storage cabinets
- Kenmore washer and dryer
- Fluorescent lighting

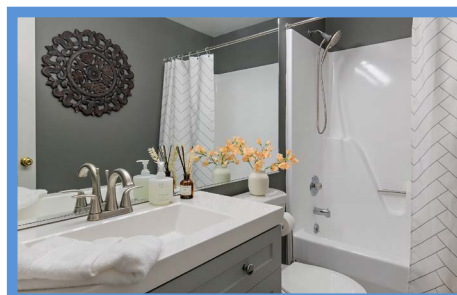
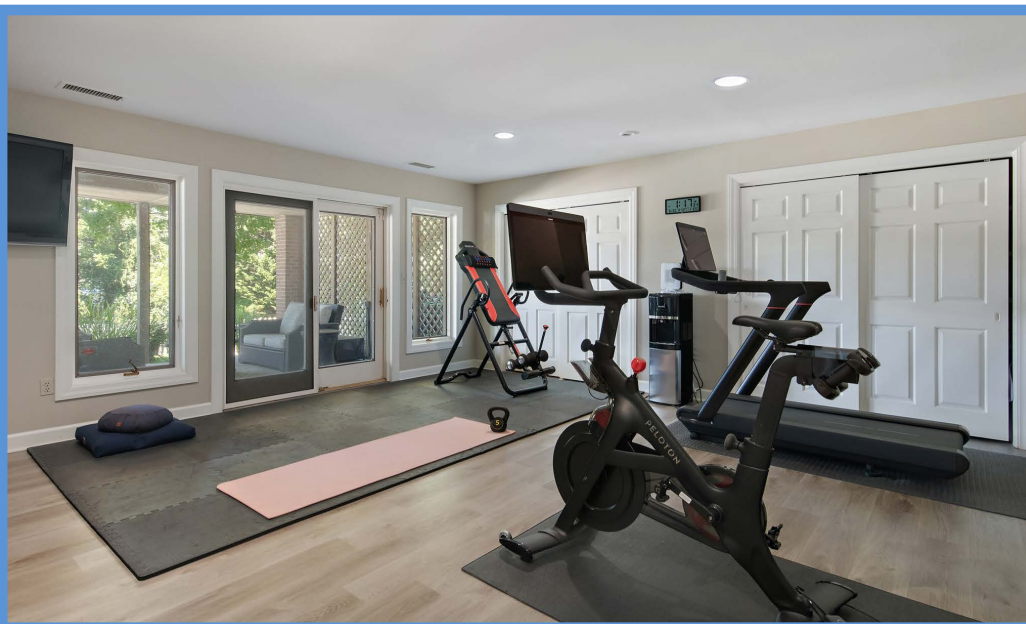
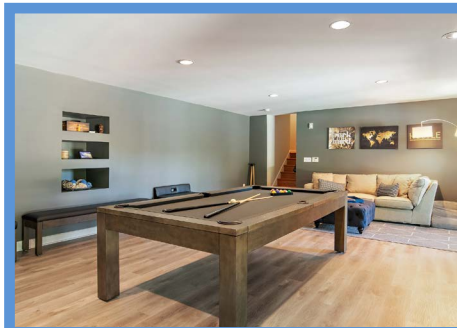
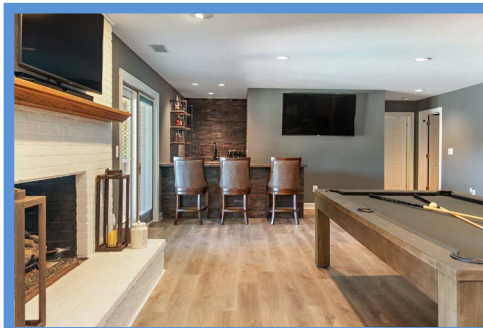
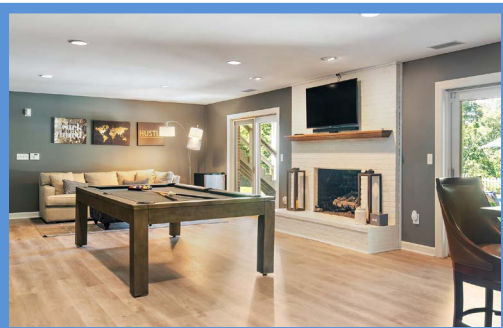
LOWER LEVEL

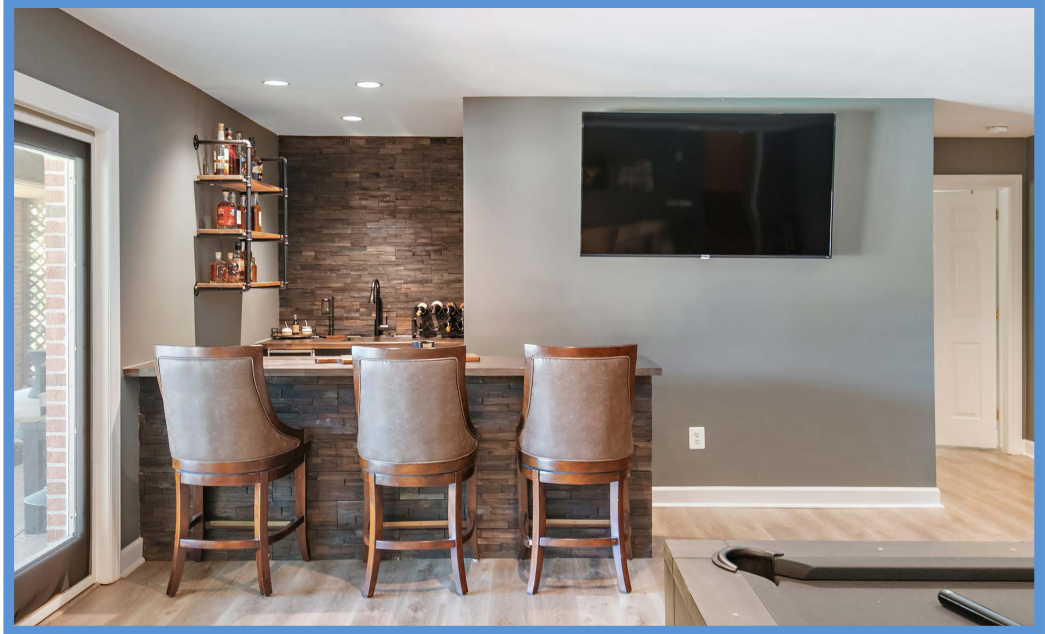
RECREATION ROOM

37'2" X 18'8"

- Luxury vinyl plank flooring
- Brick chimney wall with gas fireplace on raised hearth and wood mantel shelf
- Wet bar with rustic stone tile bar front and back wall, butcher block counters, steel pipe/wood plank wall mount shelving, stainless steel sink and icemaker
- Sliding glass doors to Patio and Pool area
- Open staircase to main level Family Room







- Three display wall niches
- Recessed lighting
- Wall mount TV and sound bar above fireplace
- Additional wall mount TV
- Passage to Home Gym/Bedroom, Bath and access to Hall to Storage Room (20' X 14') and Storage/Utility Room

HOME GYM/BEDROOM 6 18'9" X 17'11"

- Luxury vinyl plank flooring
- Sliding glass doors to covered Patio flanked by 2 windows
- Plate glass mirror wall panels
- Two double closets
- Recessed lighting
- Wall mount TV

BATH

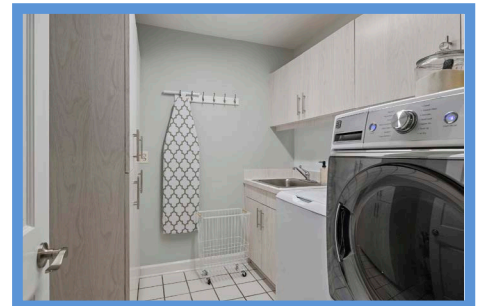
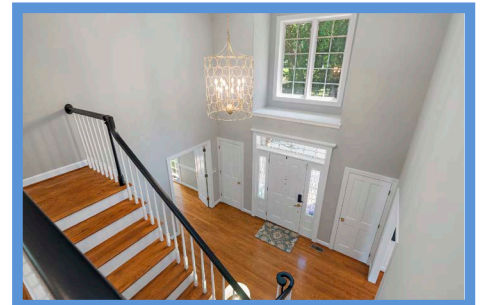
- Luxury vinyl plank flooring
- Vanity with solid surface top and seamless sink, plate glass mirror and overhead lighting
- Tub/shower combination
- Exhaust fan

STORAGE/UTILITY ROOM 42'0" X 14'7"

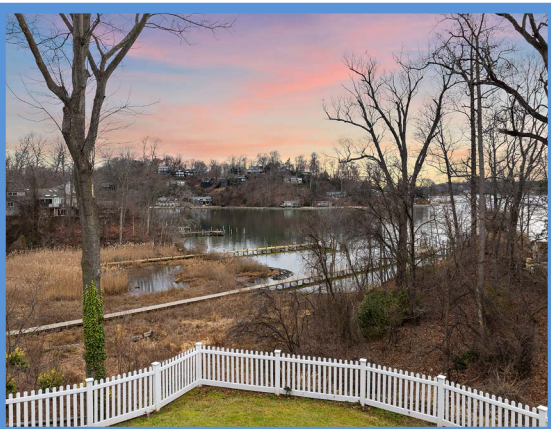
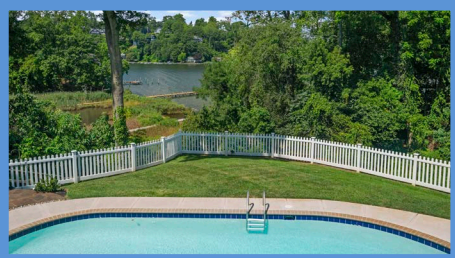
- Unfinished
- Electric HVAC unit- 2014
- Electric water heater- 2011
- Well water tank
- Storage shelving

EXTERIOR

- All brick
- Architectural asphalt roof
- Brick steps and archway to covered front porch at main entry
- Additional covered front porch to Mudroom
- Fenced back yard
- Wraparound engineered wood main level Deck with vinyl railings, pergola at Sunroom, gated staircase to Pool area and access from Sunroom and Family Room
- Stamped concrete covered Patio with round stone firepit, access from Home Gym and flows to covered walkway/gardens with access from Recreation Room and to Pool area
- Upper level private Primary Bedroom Deck with engineered wood decking and vinyl railings
- Additional upper level covered private Deck for Bedroom 3
- In-ground Pool (heated?) with concrete pool decking flowing to stone Patio
- Professionally landscaped and maintained 1.14 acres set on a private lot in The Point of The Downs overlooking the Severn River



All information contained herein deemed reliable but not guaranteed by the Broker



*Hubble
Bisbee*

CHRISTIE'S
INTERNATIONAL REAL ESTATE

GREEN SPRING
STATION
410-321-1411



ANNAPOLIS
410-321-1833

